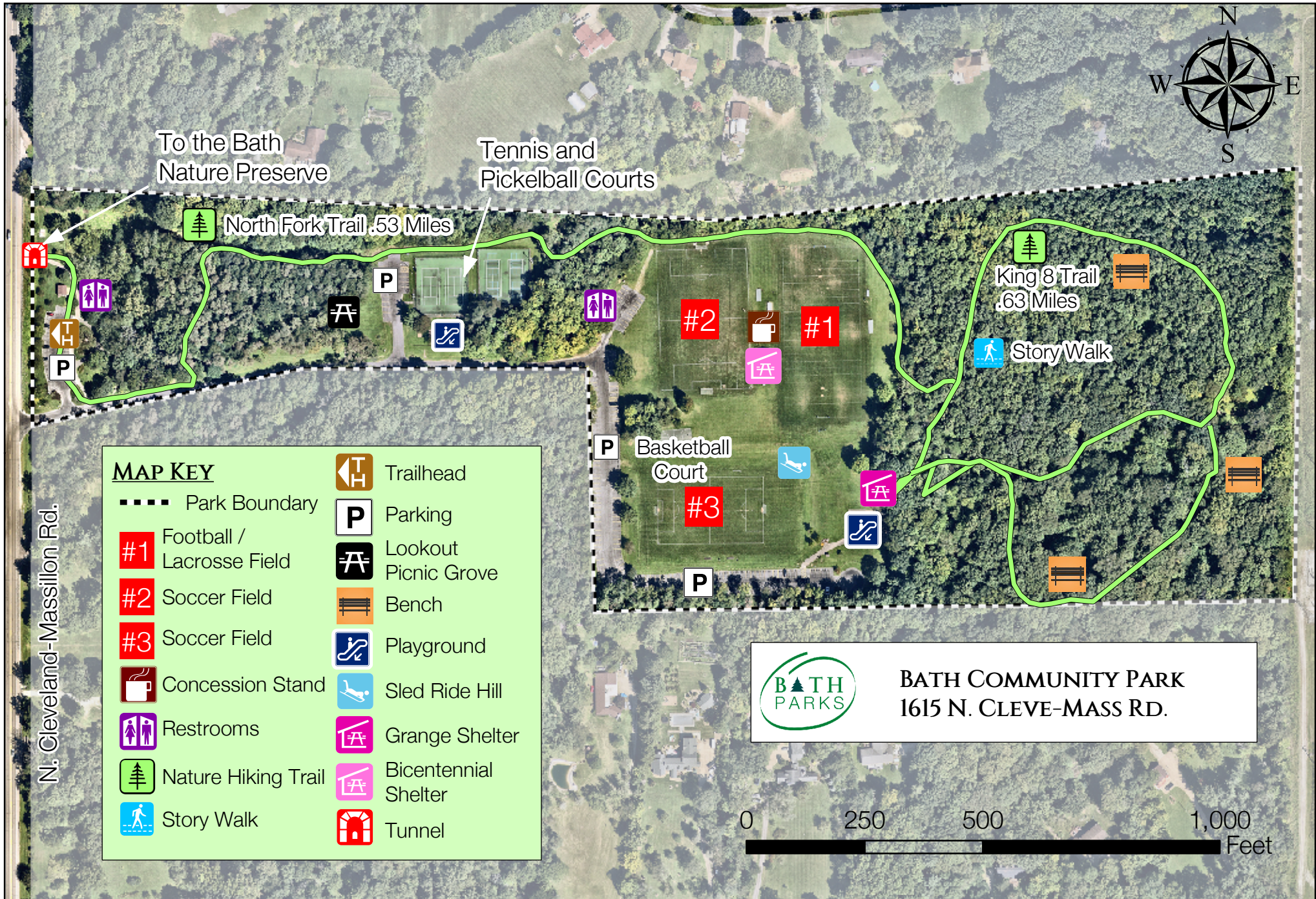


BATH COMMUNITY PARK 1615 N. CLEVE-MASS RD.



MAP KEY

- Park Boundary
- #1 Football / Lacrosse Field
- #2 Soccer Field
- #3 Soccer Field
- ☕ Concession Stand
- 🚻 Restrooms
- 🌲 Nature Hiking Trail
- 🚶 Story Walk
- 🏠 Trailhead
- P Parking
- 🏹 Lookout Picnic Grove
- 🪑 Bench
- 🎡 Playground
- 🛷 Sled Ride Hill
- 🏠 Grange Shelter
- 🏠 Bicentennial Shelter
- 🏠 Tunnel

BATH COMMUNITY PARK
1615 N. CLEVE-MASS RD.



This map is for informational use only. No representation is made or warranty given as to its content. The user assumes all risk of use. Bath Township assumes no responsibility for any loss or delay resulting from such use. Data Source: Summit County GIS data. Prepared by Bath Township, April 2025.